



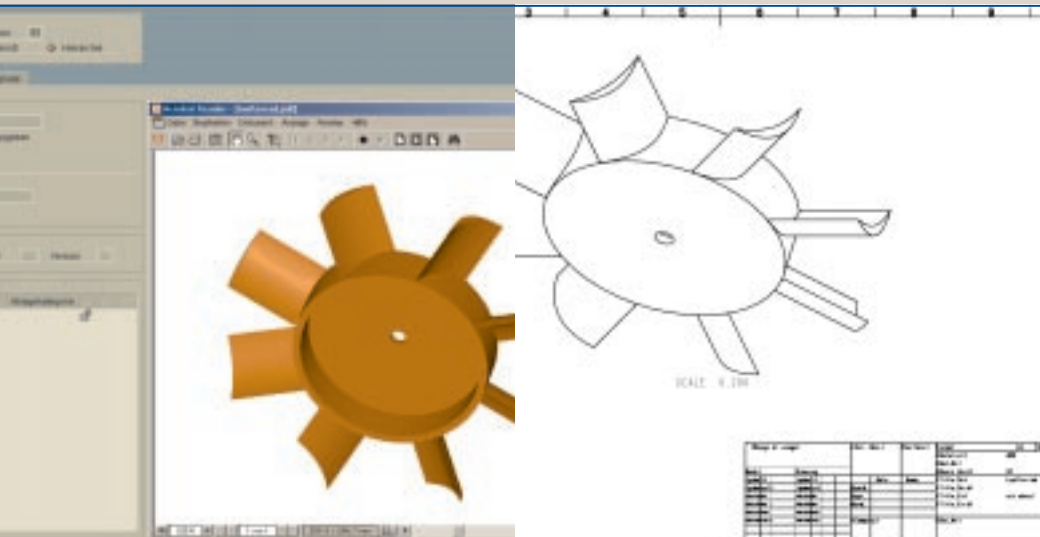
- > AUTOMATIC CREATION OF NEUTRAL 2D-FORMATS SUCH AS TIFF AND PDF OR 3D-FORMATS SUCH AS STL OUT OF PRO/ENGINEER MODELS AND DRAWINGS AFTER RELEASE IN BATCH MODE
- > PLOT-ENGINE TRIGGERED OUT OF SAP R/3®
- > CONFIGURABLE OUTPUT FORMATS SUCH AS HPGL, TIFF, PDF AND OTHERS
- > SUPPORT OF MULTIPLE SHEETS
- > CONFIGURABLE CONTROL OF THE PRO/ENGINEER PARAMETERS BEFORE THE PLOTTING PROCESS
- > READ AND WRITE ACCESS TO SAP PARAMETERS
- > AUTOMATIC CREATION AND CHECKING IN OF VIEWING AND/OR PLOT FILES TO SAP R/3®
- > RELEASE IN PRO/INTRALINK® AND SAP R/3®
- > STAMPING OF ADDITIONAL INFORMATION POSSIBLE

THE OBJECTIVE

- Models and drawings that are to be released must be checked out before they can be changed and then checked into the common space.
- SAP users from other departments who do not have access to CAD systems must be allowed to view drawings and models which have been released from Pro/ENGINEER®. It should be possible to make the access directly from SAP.
- In addition to this, when the latest version of the drawing is released it's parameters must be saved in a plot and viewing capable format such as HPGL, TIFF or PDF.
- Additional information – not contained in the parameters – has to be stamped on the plot file.

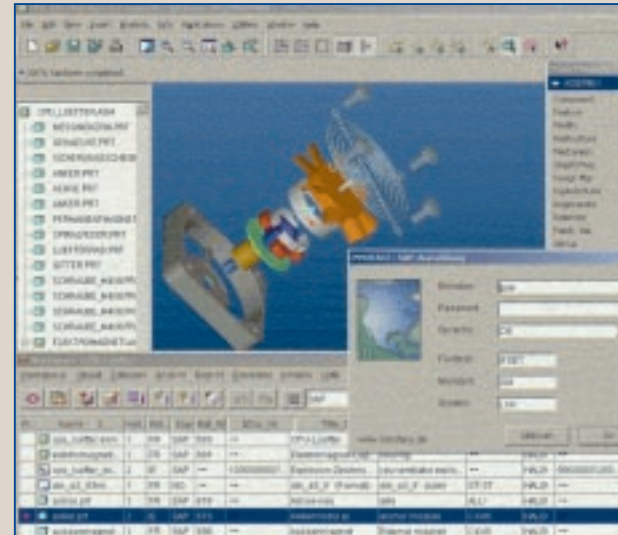
THE PROBLEMS

- Not every user has access to a CAD system that allows him to view or print drawings and models.
- Drawings and models which have been released cannot be changed. The name of the person responsible for the release, the release status and the release date must be included in drawing-head.
- If the release information is recorded before the actual release, it is possible that changes can still be made.
- Providing the release of plot and/or viewing formats is a manual process. It cannot be guaranteed that they will be assigned to the proper document in SAP R/3®.



RELEASING AND PLOTTING WITH THE INNOFACE RELEASE AND PLOT ENGINE (IF-RPE)

- A reliable release process is achieved by automating the release and plotting steps using IF-RPE®.
- This transaction can be triggered either by a release change in a SAP R/3 document or an increased development phase in Pro/INTRALINK®.
- IF-RPE reacts to the release and carries out the following steps:
 - a checking out of the effected models and drawings from the common space in a temporary workspace.
 - Updating of the header parameters.
 - the creation of a plot and/or viewing format.
 - Check in of created file to SAP R/3 Document Management (Vault or KPRO).



THE ADVANTAGES

- The automated process saves time.
- Errors are minimised.
- It is assured that the viewing and/or plot formats of released drawings in the SAP R/3® document are brought up-to-date.
- Creating of viewing file and release procedure are executed in one transaction



4	1853	4
5	ACHSE	5
6	1853	
7	PERMANENTMAGNET	6
8	SPIRALFEDER	7

TECHNICAL SPECIFICATIONS: RELEASE AND PLOT ENGINE FOR PRO/INTRALINK – SAP R/3 (IF-RPE)

FEATURES

- Create standard formats like
 - TIFF, PDF, HPGL, DXF (2D)
 - STL, VRML (3D)
- Access to Pro/ENGINEER parameters
- Send files by e-mail
- Configurable workflow

REQUIREMENTS

- Pro/INTRALINK® Toolkit Access Version 2.0 or 3.X
- Pro/ENGINEER® Version >= 2001
- Windows NT®, Windows 2000®, Windows XP®
- SAP R/3® Version 4.0B - 4.7

HARDWARE REQUIREMENTS

The hardware must meet the requirements of a Pro/ENGINEER workstation which is capable of processing and printing huge drawings and models within an acceptable amount of time.



INNOfACE GMBH
Enterprise / Application / Integration

Essenweinstr. 6 // 76131 Karlsruhe // Germany
Tel.: +49 (0)721 6268 730 // Fax: +49 (0)721 6268 733
www.innoface.de // sales@innoface.de