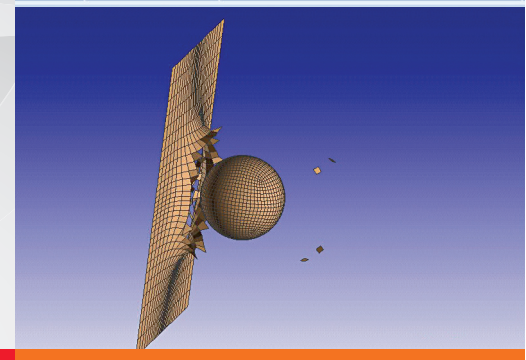
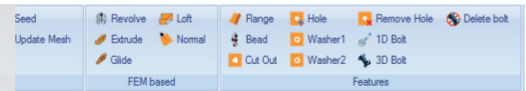


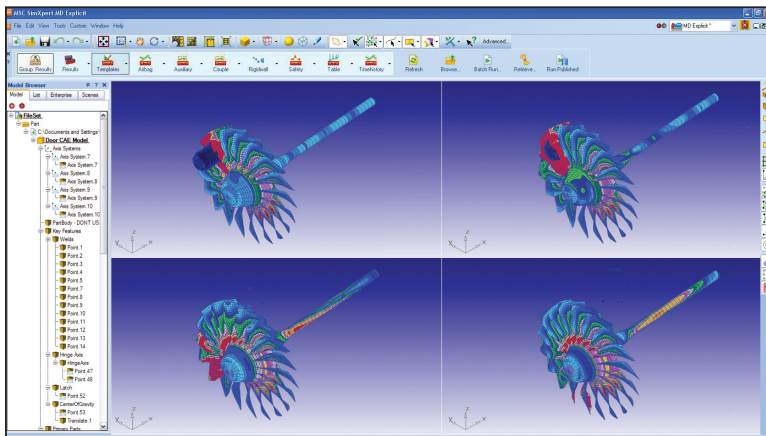
SimXpert Explicit

Make Explicit Dynamics Analysis Part of Your Enterprise Simulation Process



Overview

SimXpert Explicit is the next generation Computer Aided Engineering environment for customers requiring advanced explicit dynamics finite element simulation using MD Nastran. It brings together game changing end-to-end multidiscipline simulation capabilities and best practice methodology capture and deployment technologies in a single unified environment. This approach closes the collaboration gap that exists between analysts and designers, enabling them to leverage common data models and share critical information across disciplines without duplicating work and allows them to deploy their best practices to the extended enterprise. This radical change to the traditional analysis process enables manufacturers to accelerate the speed and accuracy of simulation, increase design productivity, and bring better products to market faster.



A Member of the Integrated Suite of Multidisciplinary Simulation Workspaces

As a key enabler of Enterprise Simulation, SimXpert provides the best platform for expert analysts to complete all stages of the simulation process – from pre-processing and modeling, through solution, to post-processing, results manipulation and reporting – within one integrated workspace environment. These workspaces allow the analyst to easily move from one discipline to another while sharing data models and results.

Structures Workspace – Perform linear and advanced non-linear, static and dynamic structural analyses based on the very best solutions available in MD Nastran

Thermal Workspace – Evaluate and analyze the thermal performance of designs by using the linear and non-linear, steady state and transient analysis capabilities of MD Nastran.

Motion Workspace – Predict loads and analyze system motion based on MSC's leading MD Adams capabilities. Bring in flexible bodies, and pass through nodal loads seamlessly.

Explicit Workspace – Use MD Nastran to perform large deformation, highly nonlinear, short duration transient dynamic analyses for both structural impact and coupled fluid-structure interaction problems.

Crash Workspace – A complete pre- and post- processing environment for vehicle crash and impact analysis based on LS-DYNA™, the most widely used crash solver in the market.

Advanced Solution Extensions – SimXpert is an open platform enabling easy integration with third party tools as well as the creation of customized workspaces.

Capabilities

- Perform state of the art explicit dynamics finite element analyses by using the best capabilities of MD Nastran™
- Increase the pace of analysis with an advanced crash focused workspace that integrates Pre-, Post- and Solver processing
- Capture and deploy best practice CAE methods by integrating with MSC's SimEnterprise Suite™, SimManager™ and SimDesigner™
- Improve modeling speed and accuracy with native CAD access and bi-directional connectivity
- Smoothly exchange key data between disciplines using the integrated multi-discipline workspaces

Benefits

- Increase productivity by handling all requirements of the analysis process within one intuitive environment, and with advanced tools for crash impact modeling
- Shorten design cycles by enabling maximum collaboration across the extended enterprise
- Maximize business efficiencies by capturing CAE best practices and deploying throughout the enterprise using SimManager
- Improve accuracy and product quality by unifying the multi discipline simulation process into a single, integrated environment, leveraging the common data model across simulation disciplines
- Drive innovation by delivering simulation process improvements throughout the enterprise, releasing experts to focus on design improvements

Enabling Capabilities

- Intuitive object-based user interface with contextual actions
- View, manipulate, and organize your model with advanced browser functionality
- Native bi-directional CAD access for CATIA, Pro/ENGINEER, and NX
- Import IGES, Parasolid, CATIA V4, CATIA V5, Pro/ENGINEER, ACIS, STEP and STL data for FE modeling
- Interactive CAD cleaning and healing with auto curve, shell, and solid meshing
- Define simulation properties using engineering terms for use across all workspaces
- Contact creation and setup through easy and intuitive contact tables
- Visualize and manipulate all CAE entities
- User configurable toolsets and menus to streamline the modeling process
- Includes the complete set of specialized Crash modeling tools

Explicit Dynamics Simulation

- Vehicle Crash and Occupant Safety
- Fluid-Structure interaction
- Drop Tests
- High Velocity and Projectile Impact
- Time domain NVH capturing non-linear behavior

Multi-Discipline

- Simplify simulation chaining by leveraging MD Nastran's common data model

Features

- Surface Meshing algorithms: paver, mapped, minimal, quad-dominant
- Mesh seeding: uniform/bias
- Assembly meshing
- Virtual geometry / topological simplification
- Connections: Adhesive, bolt, seam weld
- Check and correct contact penetrations
- Import and export of solver input files
- Create control cards and parameters

Post-processing

- View model, state plots and x-y charts and graphs simultaneously using multiple windows
- Result data probes
- Animate displacements, stresses, strains, and vectors
- Display 'Failed' elements
- Multi-file attachment
- Report generation

Process Capture and Automation

- Capture and record specific processing tasks as macros
- Directly integrate macros to create highly complex SimTemplate™ CAE processes
- Build complex SimTemplate CAE processes based on SimXpert macros and SimXpert scripting to standardize and automate complete end-to-end analyses.
- Perform batch processing of SimTemplates

MSC SimEnterprise Integration

- "Out of the box" integration with MSC SimManager and SimDesigner delivers a true Enterprise Simulation solution
- Manage and control simulation processes, templates, analysis data and results
- Deploy best practices throughout the extended enterprise
- Supported by MSC Enterprise Advantage Licensing Program

System Requirements

SimXpert is supported on Intel and AMD x86 and x86-64 based systems running Microsoft Windows XP Professional (including SP2), Microsoft Vista Ultimate and Enterprise Editions, and Red Hat Enterprise Linux 4 (including Update 3 and Update 4).

Corporate

MSC Software Corporation
2 MacArthur Place
Santa Ana, California 92707

Telephone 714.540.8900

www.mssoftware.com

Europe, Middle East, Africa

MSC Software GmbH
Am Moosfeld 13
81829 Munich, Germany

Telephone 49.89.431.98.70

Asia-Pacific

MSC Software Japan LTD.
Shinjuku First West 8F
23-7 Nishi Shinjuku
1-Chome, Shinjuku-Ku
Tokyo, Japan 160-0023

Telephone 81.3.6911.1200

Asia-Pacific

MSC Software (S) Pte. Ltd.
100 Beach Road
#16-05 Shaw Tower
Singapore 189702

Telephone 65.6272.0082